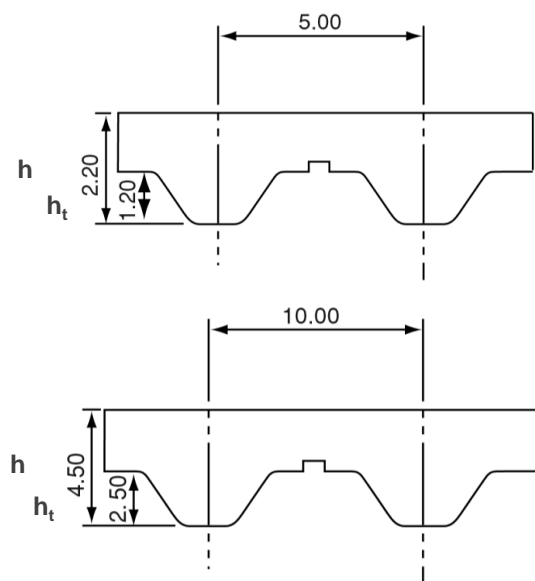
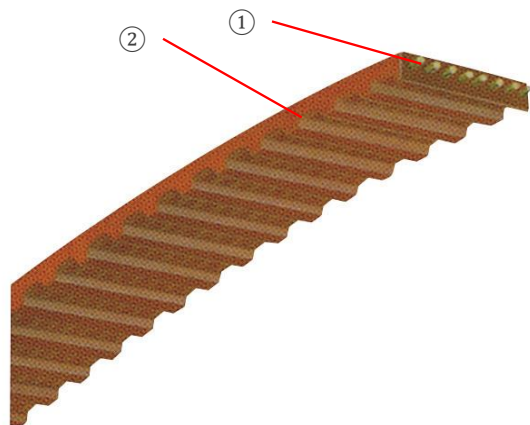


Single - T5 & T10



Product Information

Our standard rubber and polyurethane timing belts follow JIS and ISO standard. There is a variety of tooth profiles and size variations available with a wide product availability.



	T5	T10
Belt type	Polyurethane timing belt	
Tooth height h_t [mm]	1.20	2.50
Belt thickness h [mm]	2.20	4.50
① Cord	Steel / Aramid	
② Material	Polyurethane	
Heat resistance temperature [°C]	90	
Cold resistance temperature [°C]	-30	
Max. belt speed [m/s]	30	
Wear resistance	Good	
Electric conductivity	Yes	

Product Code

WT5-10-500

T5: Tooth profile 10: Width (mm) 500: Belt length (mm)