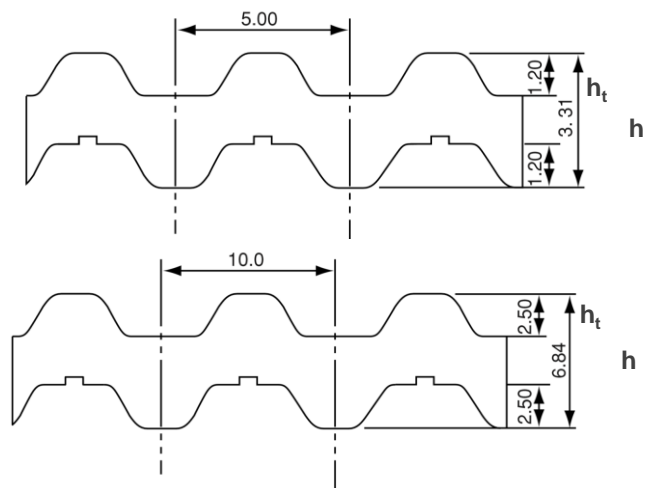
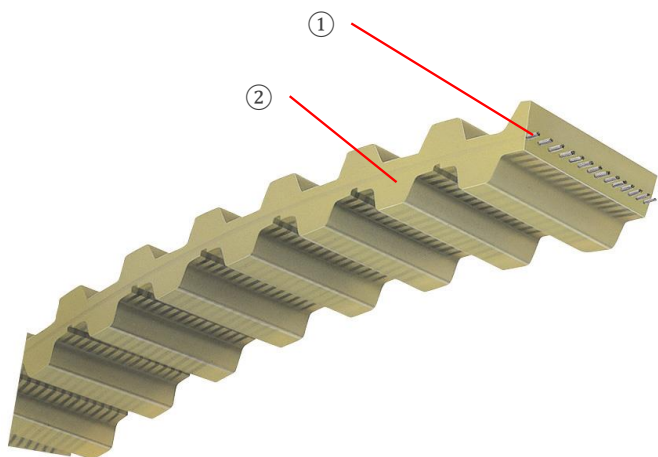


Double - DT5 & DT10 (PU)



Product Information

Our standard rubber and polyurethane timing belts follow JIS and ISO standard. There is a variety of tooth profiles and size variations available with a wide product availability.



	DT5	DT10
Belt type	Polyurethane timing belt	
Tooth height h_t [mm]	1.20	2.50
Belt thickness h [mm]	3.31	6.84
① Cord	Aramid / Steel	
② Material	Polyurethane	
Heat resistance temperature [°C]	+80	
Cold resistance temperature [°C]	-20	
Max. belt speed [m/s]	25	
Wear resistance	Normal	
Electric conductivity	Yes	

Product Code

WDT5-10-500

D: Double sided

T5: Tooth profile

10: Width (mm)

500: Belt length (mm)