

Elaxen

CONVEYOR & ELEVATOR BELTS

TEXTILE AND STEEL REINFORCED SOLUTIONS





SUMMARY

1. The Company Laboratory
2. Conveyor Belt Structure
3. Steel Cord conveyor belts
4. EP/NN Multy Ply conveyor belts
5. Straight Warp Conveyor Belt
6. Cross Rigid Conveyor Belt
7. Heat Resistant Conveyor Belt
8. Fire Resistant Conveyor Belt
9. Oil Resistant Conveyor Belt
10. Pipe Conveyor Belt
11. Aramid Conveyor Belt
12. Chevron Conveyor Belt

THE COMPANY

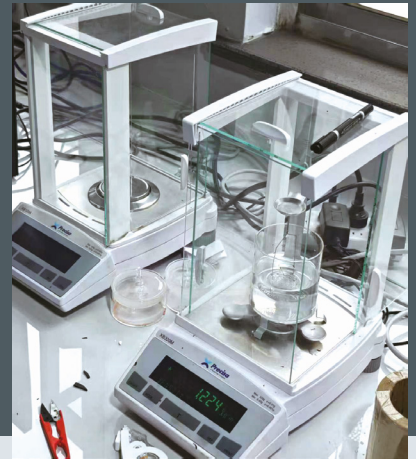
ELAXEN is a modern manufacturer of high-quality rubber-textile and steel-reinforced conveyor belts. The company's production facilities are located in China and India.

ELAXEN offers a wide range of multi-ply rubber-textile belts (EP, NN, CC), including oil-resistant, heat-resistant, flame-retardant, chevron, and steel cord belts.

ELAXEN products are used in the agricultural sector, metallurgy, cement production, as well as in port operations, coal, and mining industries.



THE COMPANY LABORATORY



JIS

Standard		JIS-P	JIS-G	JIS-S	JIS-A	JIS-L	JIS-D	JIS-H	
Tensile test	Before Aging	Tensile Strength (Mpa)	> 8	> 14	> 18	> 14	> 15	> 18	> 24
		Elongation(%)	> 300	> 400	> 450	> 400	> 350	> 400	> 450
	After Aging	Change rate of TS(%)	± 40	± 30	± 25	± 25	± 25	± 25	± 25
		Change rate of EL(%)	± 40	± 30	± 25	± 25	± 25	± 25	± 25
Abrasion test (m)		< 400	< 250	< 200	< 150	< 200	< 100	< 120	

DIN

Standard		DIN-W	DIN-X	DIN-Y	DIN-Z	
Tensile test	Before Aging	Tensile Strength (Mpa)	> 18	> 25	> 20	> 15
		Elongation(%)	> 400	> 450	> 400	> 350
	After Aging	Change rate of TS(%)	± 25	± 25	± 25	± 25
		Change rate of EL(%)	± 25	± 25	± 25	± 25
Abrasion test (m)		< 90	< 120	< 150	< 250	

AS

Standard		AS-A	AS-E	AS-F	AS-M	AS-N	AS-S	
Tensile test	Before Aging	Tensile Strength (Mpa)	17	14	14	24	17	14
		Elongation(%)	400	300	300	450	400	300
	After Aging	Change rate of TS(%)	± 20	± 20	± 20	± 20	± 20	± 20
		Change rate of EL(%)	± 30	± 30	± 30	± 30	± 30	± 30
Abrasion test (m)		70	-	-	125	200	250	

ISO

Standard		ISO-H	ISO-D	ISO-L	
Tensile test	Before Aging	Tensile Strength (Mpa)	24	18	15
		Elongation(%)	450	400	350
	After Aging	Change rate of TS(%)	± 25	± 25	± 25
		Change rate of EL(%)	± 25	± 25	± 25
Abrasion test (m)		120	100	200	

BS

Standard		BS-N17	BS-M24	
Tensile test	Before Aging	Tensile Strength (Mpa)	> 17	> 24
		Elongation(%)	> 400	> 450
	After Aging	Change rate of TS(%)	± 25	± 25
		Change rate of EL(%)	± 25	± 25

RMA

Standard		RMA-1	RMA-2	
Tensile test	Before Aging	Tensile Strength (Mpa)	> 17	> 14
		Elongation(%)	> 400	> 400
	After Aging	Change rate of TS(%)	± 25	± 25
		Change rate of EL(%)	± 25	± 25

CONVEYOR BELT STRUCTURE

Conveyor belt is used to transport the materials at some distance continuously and has the most convenient and economical merits in the material transportation. Recently, conveyor belt is used in various fields from the escalator in a department store and subway to all kinds of industries such as the transportation of coal and ore, the transportation process of raw material of cement and half finished goods and the unloading work in harbor, railroad station and warehouse.

1. COVER RUBBER

Consists of the main raw materials such natural or synthetic rubber and protects the carcass. It has the properties resistant to abrasion, heat, oil, chemical, static and fire, depends on the condition of use.

2. CARCASS

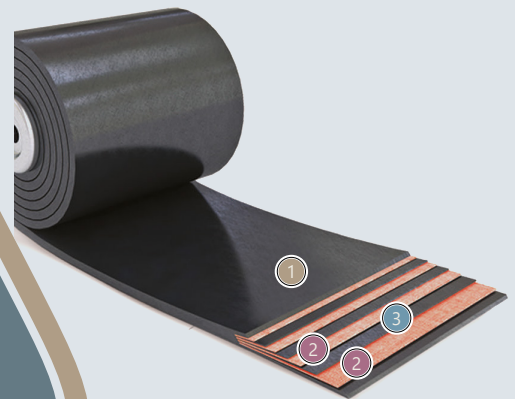
Keep the tension of belt and supports the handling materials, and uses the covered fabric, nylon, polyester, steel cord and aramid as the good adhesive rubber.

3. ADHESIVE RUBBER

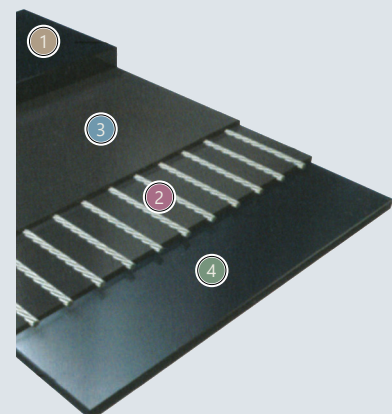
Keeps the adhesive strength between all layers of carcass and the cover rubber against the sustaining flexibility to belt and uses rubber of low fatigue to stress.

4. REINFORCED COVER

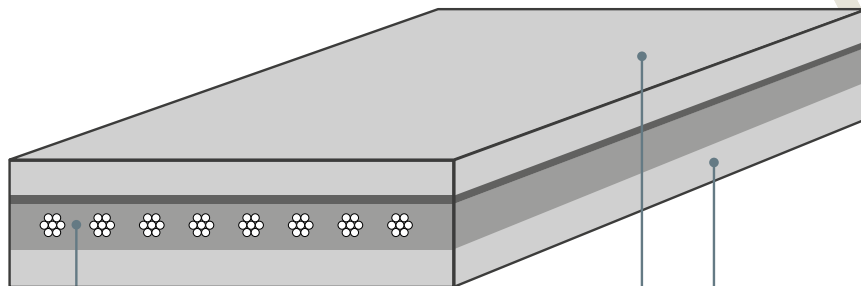
It is good for protecting the carcass to insert the reinforced cover between carcass and the layers of cover rubber in cast that the materials has large tear or big and belt is greatly shocked in bad condition of falling.



- 1 Cover Rubber
- 2 Carcass
- 3 Adhesive Rubber
- 4 Reinforcef Cover



CONSTRUCTION



CARCASS

Steel Cord
NN (Nylon-Nylon)
EP (Poliester-Nylon)
SW (Straight Warp)
Aramid

COVER

Abrasion Resistant
Cut Resistant
Heat, Oil, Cold Resistant
Flame Resistant
Energy Saving Compound

STEEL CORD #CONVEYOR BELTS



- It is ideal for long-distance, large-capacity and high tensile strength lines.
- Low elongation allows short take-up strokes.
- Small diameter pulleys may be used.

APPLICATION:

Steel cord conveyor belts are widely used in high strength, long distance and heavy load transportation of materials and they are also used in high strength and short distance transportation of materials on special occasions.

FEATURE:

1. High tensile strength; the belts are suitable for large span, long distance transportation of materials.
2. Small elongation in use: the belts need only a very short take-up stroke distance.
3. Small diameter of drive pulley: the belt body has a layer of longitudinally arranged steel cords as its skeleton, and thus is resistant to flex fatigue. Therefore drive pulley of smaller diameter can be used to make the equipment smaller.
4. High adhesion between rubber and steel cord: the steel cords are coated with zinc on their surface, and also the rubber used has the property of good adhesion with steel cords. Therefore, the rubber is tightly adhered to the steel cords and is resistant to shock and difficult to drop, so the rubber belts are long in life.
5. Even tension of steel cords: out of our advanced techniques in manufacturing, the steel cords are very evenly arranged and have the same tension, so the belts are well balanced in running and difficult to run away.
6. Good troughability: As the belt body has no transverse skeleton, it is easy to form a deep trough, so the belts can load more materials and prevent the materials from escaping.
7. Inspection of the skeleton steel cords on the conveyor machines to prevent accidents from happening.

ADHESION OF STEEL CORD

Strength	ST 630	ST 800	ST 1000	ST 1250	ST 1600	ST 2000	ST 2500	ST 3150	ST 4000	ST 4500	ST 5000	ST 5400	ST 6300
Adhesion N/mmGB9770-88	54	60	64	69	74	84	98	108	118	60	60	60	60
Adhesion N/mmDIN22131-88	60	70	80	95	105	105	130	140	145	150	165	175	180

STANDARD SPECIFICATIONS

Belt strength (st-No.)	Cord dia max (mm)	Cord structure	Pitch P (mm)	Standard rubber coverthickness t1t2 (mm)	Belt weight (Kg/m ²)	Min. Pulleydiam. (mm)	Cord strengthKN /piece
ST-630	3	6*7+1WS	10	5*5	20	800	6.93
ST-800	3.5	6*7+1WS	10	5*5	20.6	800	8.8
ST-1000	4	6*7+1WS	12	6*6	24.7	800	12.9
ST-1250	4.5	6*7+1WS	12	6*6	25.4	800	16.1
ST-1600	5	6*7+1WS	12	6*6	26	1000	20.6
ST-2000	6	6*7+1WS	12	8*6	30	1000	25.6
ST-2500	7.5	6*19W+1WS	15	8*6	32.2	1250	40
ST-3150	8.1	6*19W+1WS	15	8*8	35.7	1400	50.5
ST-4000	8.9	6*19W+1WS	15	8*8	37.8	1600	63.5
ST-4500	9.7	6*19W+1WS	16	8*8	38.7	1800	76.3
ST-5000	10.9	6*19W+1WS	17	8.5*8.5	41.9	1800	91
ST-5400	11.3	6*19W+1WS	17	9*9	43.9	2000	95.2
ST-6300	12.5	6*19W+1WS	19.5	10*10	48.3	2000	130.4
ST-7000	13.5	6*19W+1WS	19.5	10*10	48.3	2000	142.4
ST-7500	15	6*19W+1WS	21	10*10	48.3	2000	166.7

STANDARD SPECIFICATIONS

Belt width (mm)	ST 630	ST 800	ST 1000	ST 1250	ST 1600	ST 2000	ST 2500	ST 3150	ST 4000	ST 4500	ST 5000	ST 5400	ST 6300	ST 7000	ST 7500
800	75	75	63	63	63	63	50	50	51	48	45	45	N/A	N/A	N/A
1000	95	95	79	79	79	79	64	64	64	59	55	55	N/A	N/A	N/A
1200	113	113	94	94	94	94	76	76	77	71	66	66	58	59	54
1400	133	133	111	111	111	111	89	89	90	84	70	70	68	69	64
1600	151	151	126	126	126	126	101	101	104	96	90	90	78	80	73
1800	171	171	143	143	143	143	114	114	117	109	102	102	89	90	83
2000	191	191	159	159	159	159	128	128	130	121	113	113	99	100	92
2200	211	211	176	176	176	176	141	141	144	134	125	125	109	110	102
2400	231	231	193	193	193	193	155	155	157	146	137	137	119	119	110

CHARACTERISTIC AND GRADES

Test items		Property indexes				
		GB700-88		DIN22131-88		
		Class H	Class M	Class W	Class X	Class Y
Tensile strength	Mpa ≥	17.65	13.75	18	25	20
Elongation at break	% ≥	450	400	400	450	400
After aging Change rate of tensile strength Change rate of elongation	%	-25 ~ +250	-25 ~ +250	-25 ~ +250	-25 ~ +250	-25 ~ +250
Abrasion	≤	0.6cm ³ /1.61Km	0.8cm ³ /1.61Km	90cm ³	120cm ³	150cm ³

MULTY PLY EP/NN #CONVEYOR BELTS

- Application in all areas of material handling: Feeding conveyors, overland belt conveyors, loading and unloading conveyors, take-off conveyors, silo conveyors.
- The carcass construction is for long life in all industrial applications.
- In the majority of cases are the best solution as far the cost efficiency is concerned.

STRUCTURE

Our renowned multi-ply EP carcass (warp polyester + weft nylon).

Special rubber layer with good fabric adhesion properties (skimmed layer).

High abrasion resistant cover quality for heavy duty application or special quality of cover on request.

MATERIAL QUALITY

Polyester

- Less elongation.
- Less deformed by heat.
- Less affected by moisture.

Nylon

- Highly flexible.
- Highly resistant against impact.
- Highly bendable.

APPLICATION GROUPS

- General
- Abrasion Resistance
- Heat Resistance
- Oil Resistance
- Fire Resistance
- Chemical Resistance
- Anti-Static



- ① Top Cover Rubber
- ② Adhesion Rubber
- ③ Bottom Cover Rubber
- ④ NN, EP Fabric

Strength (KN/m)	NO of plies	Fabric Type	Belt Width (mm)	Belt Thickness (mm)	Top Cover (mm)	Bottom Cover (mm)
100	1-6	EP/NN	300-5500	≥2	Customized	Customized
125	1-6	EP/NN	300-5500	≥2	Customized	Customized
150	1-6	EP/NN	300-5500	≥2	Customized	Customized
200	1-6	EP/NN	300-5500	≥2	Customized	Customized
250	1-6	EP/NN	300-5500	≥2	Customized	Customized
300	1-6	EP/NN	300-5500	≥2	Customized	Customized
350	1-6	EP/NN	300-5500	≥2	Customized	Customized
400	1-6	EP/NN	300-5500	≥2	Customized	Customized
450	1-6	EP/NN	300-5500	≥2	Customized	Customized
500	1-6	EP/NN	300-5500	≥2	Customized	Customized
600	1-6	EP/NN	300-5500	≥2	Customized	Customized

MINIMUM RECOMMENDED PULLEY DIAMETR (mm)

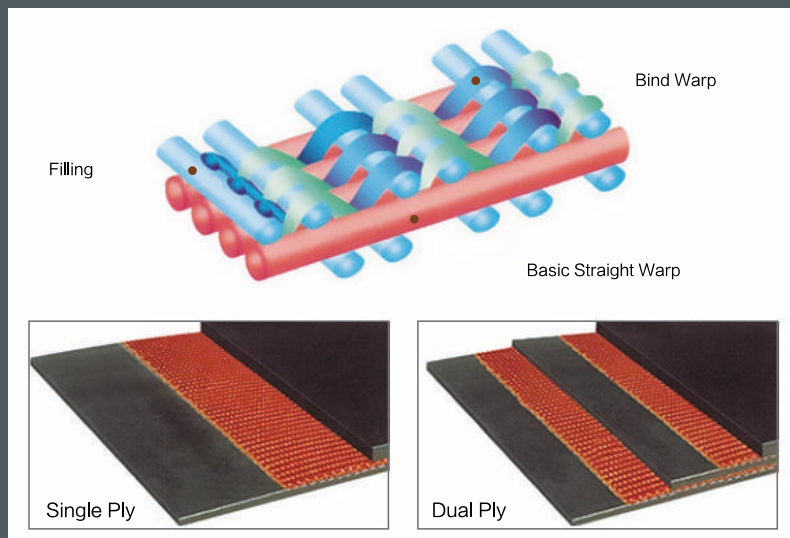
Belt style	% RMBT								
	60% up to 100%			30% up to 60% Safety factor>17			up to 30% Safety factor>33		
	A	B	C	A	B	C	A	B	C
250/2	250	200	160	200	160	125	160	160	125
315/2	250	200	160	200	160	125	160	160	125
400/3	315	250	200	250	200	160	200	200	160
500/3	400	315	250	315	250	200	250	250	200
500/4	500	400	315	400	315	250	315	315	250
630/3	500	400	315	400	315	250	315	315	250
630/4	500	400	315	400	315	250	315	315	250
800/3	630	500	400	500	400	315	400	400	315
800/4	630	500	400	500	400	315	400	400	315
1000/3	630	500	400	500	400	315	400	400	315
1000/4	800	630	500	630	500	400	500	500	400
1000/5	800	630	500	630	500	400	500	500	400
1250/3	800	630	500	630	500	400	500	500	400
1250/4	1000	800	630	800	630	500	630	630	500
1250/5	1000	800	630	800	630	500	630	630	500
1600/4	1000	800	630	800	630	500	630	630	500
1600/5	1250	1000	800	1000	800	630	800	800	630
2000/4	1250	1000	800	1000	800	630	800	800	630
2000/5	1250	1000	800	1000	800	630	800	800	630
2500/5	1600	1250	1000	1250	1000	800	1000	1000	800
3150/6	2000	1600	1250	1600	1250	1000	1250	1250	1000

Notes: A= Drive and tripper pulleys;
 B = Tail, return and take-up pulleys;
 C=Snub pulleys.

STRAIGHT WARP #CONVEYOR BELTS

- It is developed in order to withstand the toughest use conveying large quality of material.

- Mono Ply have excellent resistance to flexural fatigue, shocks and impacts with outstanding troughability.



FABRIC GRADE

GRADE	TENSILE STRENGTH (N/mm)	WORKING TENSION RATING (N/mm)	10% STRETCH (%)	APPROX. CARCASS THICKNESS (mm)
SW 400	MIN.400	40	MAX.1.0	2.0 – 2.3
SW 500	MIN.500	50	MAX.1.0	2.3 – 2.4
SW 630	MIN.630	63	MAX.1.0	2.5 – 2.8
SW 800	MIN.800	80	MAX.1.0	2.9 – 3.0
SW 1000	MIN.1000	100	MAX. 1.0	3.5 – 3.8
SW 1250	MIN.1250	125	MAX. 1.0	4.0–4.1
SW 1400	MIN.1400	140	MAX. 1.0	4.1–4.2
SW 1600	MIN.1600	160	MAX. 1.0	5.0 – 5.1
SW 1800	MIN.1800	180	MAX.1.0	5.3 – 5.4
SW 2000	MIN.2000	200	MAX.1.0	5.7

CROSS RIGID #CONVEYOR BELTS

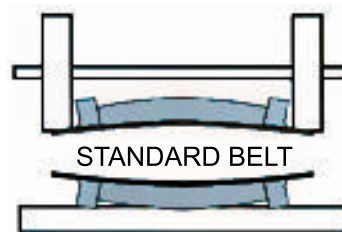
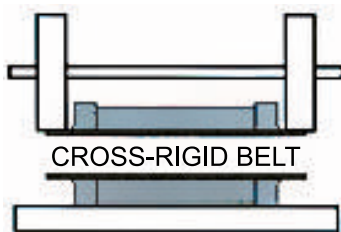
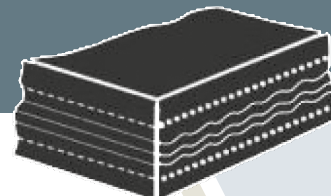
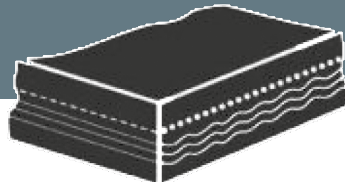
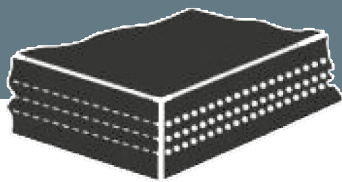
- Excellent rip protection and impact. resistance.
- Minimizes damage to belt carcass from sharp objects or strong impact.
- Prevents the belt from being torn lengthwise by sharp objects inserted between the belt and other. equipment.



TYPE : XE

TYPE : XE+1

TYPE : XE+2



Cross Rigid conveyor belts are designed to bend efficiently in a longitudinal direction and has greater rigidity in a transverse direction by utilizing reinforced fabric with monofilament, creating a fabric carcass of high tension. This type of belt remains rigid throughout the width and not form trough like conventional conveyor belts do. It is suitable for use at sidewall and cleat belts up to the inclined angle of 75 degrees.

BELT TYPE:

X=Cross-Stabilized Construction

E=Polyester Tension Plies

+1=One Ply of Cross-Stabilized

+2=Number of Separate Cross-Stabilized Plies

HEAT RESISTANT #CONVEYOR BELTS



Heat resistant conveyor belts are highly resistant to hot material such as cement, steel or sand, The cover rubber of a conveyor belt consists of a special rubber compound featuring high adhesive strength, elongation at break and excellent thermal protection force. Using diverse elastomers heat resistance varies.

Heat resistant conveyor belts manufactured according to DIN 22102 are able to convey material with a constant temperature of 200°C-short runs also up to 250°C.

APPLICATION GROUPS

Chemical sector/Fertilizer industry /Iron and steel industry/ Foundries / Glass industry/Metalworking industry/Waste incineration / Cement plants

TECHNICAL DATA

	Heat 150°	Heat 180°	Heat 200°
Tensile Strength	≥ 14N/mm ²	≥ 14N/mm ²	≥ 10N/mm ²
Abrasion	≤ 200mm ³	≤ 200mm ³	≤ 280mm ³
Elongation at break	≥ 400%	≥ 400%	≥ 350%
Const.operating temp.	≥ 150°	≥ 180°	≥ 200°

FIRE RESISTANT #CONVEYOR BELTS



One of the major risks during a production process is fire. Flame-retardant conveyor belts may therefore be used to reduce or even avert damages to persons and property in case of fire.

These types of belts have a good resistance to open flames and protect the entire conveyor against open fire. This high level of protection against fire helps to stop the spread of fire over the belt. These types of belts are used in temperatures ranging from -30 to +100°C.

APPLIED FABRIC:

EP(polyester-poliamid), NN(naylon-naylon), EE(polyester-polyester)

APLICATION GROUPS

Mining industry/
Iron and steel industry/
Ports and transshipment operations Power plants

TECHNICAL DATA

	K Quality	S Quality	V Quality
Tensile Strength	≥ 20 N/mm ²	≥ 20 N/mm ²	≥ 17 N/mm ²
Abrasion	≤ 150 mm ³	≤ 150 mm ³	≤ 200 mm ³
Elongation at break	≥ 450%	≥ 450%	≥ 350%

OIL RESISTANT #CONVEYOR BELTS



Grease, mineral oil and solvents may cause damages to normal textile conveyor belts. Even a short exposure to these substances may effect a swelling of the coverrubber. Therefore, offers oil resistant belts. The special rubber compound of the material reduces wear and increases the efficiency of the production.

Beltco product portfolio comprises the qualities MOR(medium oil resistant) and OR (oil resistant), The product specifications are also available in cross rigid XE-fabric.

APPLICATION GROUPS

Chemical and Fertilizer industry/Metal processing and Iron and steel industry/Feed industry / Grain silo /Glass and Wood industry / Recycling industry

TECHNICAL DATA

	MOR quality	OR quality
Tensile Strength	$\geq 14 \text{ N/mm}^2$	$\geq 16 \text{ N/mm}^2$
Abrasion	$\leq 200 \text{ mm}^3$	$\leq 160 \text{ mm}^3$
Elongation at break	$\geq 300\%$	$\geq 350\%$

PIPE #CONVEYOR BELTS

Pipe belt is mostly preferred to use where bulk materials must be conveyed along horizontal and vertical curves in confined spaces, and/or where the environment has to be protected resp where spillage must be avoided. Pipe belt works well at tight horizontal and vertical curves. This eliminates or reduces transfer points, which is a big cost saving.



TECHNICAL SPECIFICATIONS OF THE TEXTILE TUBULAR CONVEYOR BELT.

Another crucial point you must focus on is the one concerning technical specifications and conveyor system design.

It is necessary to respect the specific technical data, to manufacture a suitable belt for the concerned and delicate industrial application. Otherwise, there could be serious problems connected to the belt:

- flexibility;
- stability;
- tube rigidity.

So, it is extremely important to ensure that the item can wrap around handled material and get a tubular shape to perfectly execute its task..

NOMINAL TUBE DIAMETER	INDICATIVE BELTH WIDTH	STANDARD IDLER SPACING	MINIMUM TRANSITION DISTANCE	MINIMUM CURVE RADIUS	MAX LUMP SIZE	MAX SPEED	VOLUMETRIC CAPACITY
mm	mm	mm	mm	mm	mm	m/sec	m3/h
100	450	1,10	2,5	30	33	2,2	21,2
150	600	1,10	4,0	45	45	2,2	46,9
200	800	1,30	5,0	60	60	2,5	84,7
250	1000	1,45	6,5	75	75	2,5	132,4
300	1200	1,60	7,5	90	95	3,0	190,7
350	1400	2,00	9,5	105	110	3,5	256,2
400	1600	2,20	10,0	120	125	4,0	339,1
450	1800	2,30	11,0	135	140	4,5	429,2
500	1900	2,40	12,5	150	160	5,0	530,0
550	2100	2,50	13,5	160	180	5,5	641,2

*The above table is valid only for textile carcass rubber conveyor belts

ARAMID #CONVEYOR BELTS

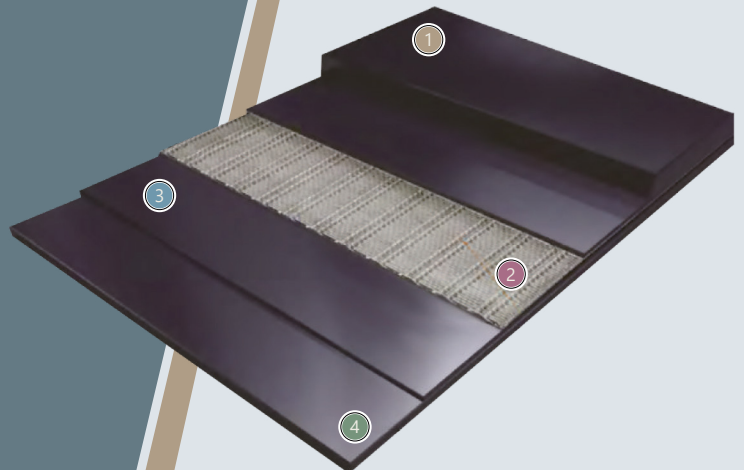


FEATURES

- Carcass contains an aramid ply, making this conveyor belt ideal for long, large-capacity and high-tensile strength lines.
- Straight-warp construction of carcass offers excellent impact resistance, abrasion resistance and flexibility.
- Belt is thinner and lighter than steel-cord conveyor belts but just as strong, thus requiring less power.
- Lower elongation allows for shorter take-up strakes, making this conveyor belt better for transporting goods in high-temperature environments than previous fabric conveyor belts.

Belt Structure

- ① Top Cover Rubber
- ② Adhesion Rubber
- ③ Bottom Cover Rubber
- ④ Aramid Fiber Layer



CHEVRON #CONVEYOR BELTS



- Excellent physical property of rubber, high adhesion and fatigue resistance
- Integrated vulcanized cover and cleat rubber prevent the chevron belt cleat from coming off.
- Better cleat rubber property and abrasion extend the useful life
- Its adjustable design for various chevron conveyor belt by incline angle from range of 16° - 45°.
- Excellent drainage character.

APLICATIONS

Chevron conveyor belt is designed for inclined transportation for conveying bulk material such as coal, sand, mineral, crop, package and bag depending on different loading material and inclined angle to choose suitable cleat height and chevron type to prevent loading material from dropping down.

Ports and transshipment operations/Wood industry / Smelteries / Coal-fired power plants / Agriculture/ Recycling industry / Sand and gravel industry/ Others

STRUCTURE

1. Excellent weather resistance and property of cleat, not easy to crack and become deformed.
2. High abrasive high tensile cleats.
3. Good flexibility and tear resistance.

4. Integrated vulcanized cleats and base belt prevent the cleats from coming off.
5. Different rubber property and carcass strength can be designed according to requirement

No. 1				No. 2				No.3-1			
C.H.(mm)	C.W(mm)	C.P(mm)	B.W(mm)	C.H.(mm)	C.W(mm)	C.P(mm)	B.W(mm)	C.H.(mm)	C.W(mm)	C.P(mm)	B.W(mm)
5	1216	80	300-1200	15	600	250	650-1000	15	520	200	600-1200
No.3-2				No.5				No.6			
C.H.(mm)	C.W(mm)	C.P(mm)	B.W(mm)	C.H.(mm)	C.W(mm)	C.P(mm)	B.W(mm)	C.H.(mm)	C.W(mm)	C.P(mm)	B.W(mm)
15	320	200	600-1200	15	750	300	800-1200	15	316.4	146	400-1200

No.7

C.H.(mm)	C.W(mm)	C.P(mm)	B.W(mm)
15	450	320	500-1200

**No.8**

C.H.(mm)	C.W(mm)	C.P(mm)	B.W(mm)
6.5	1310	100	≤1200

**No.9**

C.H.(mm)	C.W(mm)	C.P(mm)	B.W(mm)
15	800	300	850-1200

**No. 10**

C.H.(mm)	C.W(mm)	C.P(mm)	B.W(mm)
7.5	1310	116	500-1200

**No.11**

C.H.(mm)	C.W(mm)	C.P(mm)	B.W(mm)
12.7	914.4	200	≤1300

**No.12**

C.H.(mm)	C.W(mm)	C.P(mm)	B.W(mm)
15	385	256	400-1200

**No.13**

C.H.(mm)	C.W(mm)	C.P(mm)	B.W(mm)
15	750	250	800-1200

**No.14**

C.H.(mm)	C.W(mm)	C.P(mm)	B.W(mm)
15	600	250	650-1200

**No.15**

C.H.(mm)	C.W(mm)	C.P(mm)	B.W(mm)
15	550	250	600-1200

**No.16**

C.H.(mm)	C.W(mm)	C.P(mm)	B.W(mm)
15	450	250	500-1200

**No.17**

C.H.(mm)	C.W(mm)	C.P(mm)	B.W(mm)
-2	520	55.4	600-1200

**No.18**

C.H.(mm)	C.W(mm)	C.P(mm)	B.W(mm)
3	1218	77	650-1200



No.19

C.H.(mm)	C.W(mm)	C.P(mm)	B.W(mm)
6	1240	25	≤1219



No.20-1

C.H.(mm)	C.W(mm)	C.P(mm)	B.W(mm)
6	2310	77	1200-2300



No. 20-2

C.H.(mm)	C.W(mm)	C.P(mm)	B.W(mm)
6	2310	77	1219-2134



No. 21

C.H.(mm)	C.W(mm)	C.P(mm)	B.W(mm)
38.3	564	142	600-900



No.22

C.H.(mm)	C.W(mm)	C.P(mm)	B.W(mm)
15	450	170	500-1200



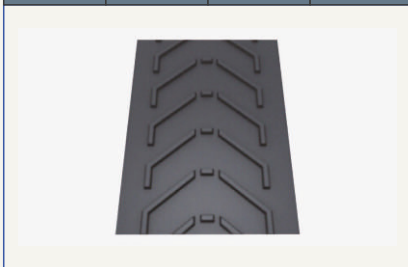
No.23

C.H.(mm)	C.W(mm)	C.P(mm)	B.W(mm)
25	750	450	800-1200



No.24

C.H.(mm)	C.W(mm)	C.P(mm)	B.W(mm)
25	475	330	500-1200



No.25

C.H.(mm)	C.W(mm)	C.P(mm)	B.W(mm)
25	575	330	600-1200



No.26

C.H.(mm)	C.W(mm)	C.P(mm)	B.W(mm)
25	775	330	800-1200



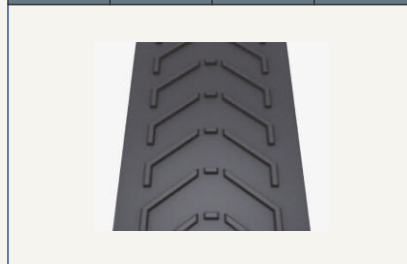
No. 27

C.H.(mm)	C.W(mm)	C.P(mm)	B.W(mm)
-5	520	219	600-1000



No.28

C.H.(mm)	C.W(mm)	C.P(mm)	B.W(mm)
15	540	170	600-1200



No. 29

C.H.(mm)	C.W(mm)	C.P(mm)	B.W(mm)
15	750	250	800-1200



No. 30

C.H.(mm)	C.W(mm)	C.P(mm)	B.W(mm)
15	750	300	1400-1600

**No.31**

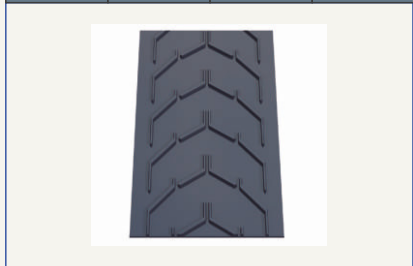
C.H.(mm)	C.W(mm)	C.P(mm)	B.W(mm)
32	900	330	1000-1200

**No. 32**

C.H.(mm)	C.W(mm)	C.P(mm)	B.W(mm)
32	—	—	800-1000

**No. 33**

C.H.(mm)	C.W(mm)	C.P(mm)	B.W(mm)
20	510	250	650-1200

**No. 34**

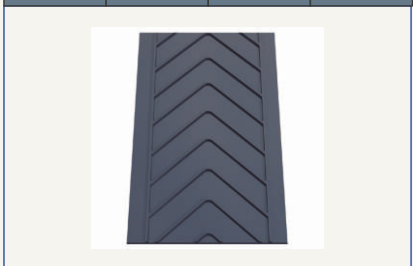
C.H.(mm)	C.W(mm)	C.P(mm)	B.W(mm)
6	601	77	1200-1219

**No. 35**

C.H.(mm)	C.W(mm)	C.P(mm)	B.W(mm)
14	605	250	600-800

**No. 36**

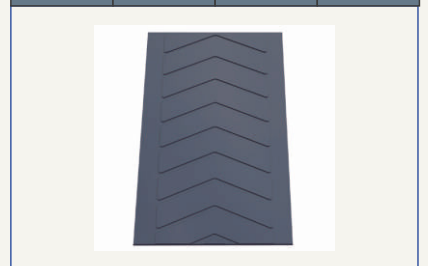
C.H.(mm)	C.W(mm)	C.P(mm)	B.W(mm)
14	655	200	650-1000

**No. 37**

C.H.(mm)	C.W(mm)	C.P(mm)	B.W(mm)
12.5	1067	381	1200-1600

**No. 38**

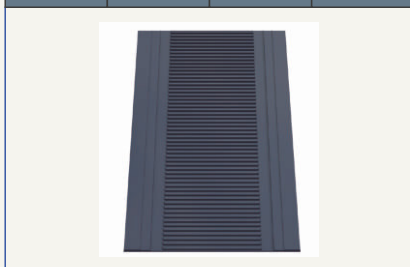
C.H.(mm)	C.W(mm)	C.P(mm)	B.W(mm)
5	565	154.5	600-800

**No. 39**

C.H.(mm)	C.W(mm)	C.P(mm)	B.W(mm)
10	1310	85.5	500-1200

**No. 40**

C.H.(mm)	C.W(mm)	C.P(mm)	B.W(mm)
9.7	490	25	600-800

**No. 41**

C.H.(mm)	C.W(mm)	C.P(mm)	B.W(mm)
15	1515	205	1800-2000



No. 42

C.H.(mm)	C.W(mm)	C.P(mm)	B.W(mm)
25	1020	400	1200-1800



No. 43

C.H.(mm)	C.W(mm)	C.P(mm)	B.W(mm)
5	2157.8	25	1400-1829



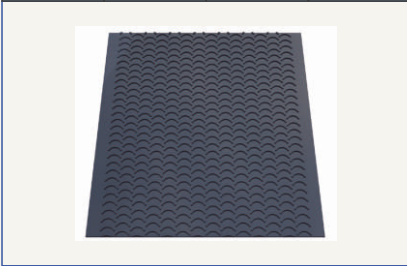
No. 44

C.H.(mm)	C.W(mm)	C.P(mm)	B.W(mm)
15	450	225	500-800



No. 45

C.H.(mm)	C.W(mm)	C.P(mm)	B.W(mm)
12.7	2135.9	98.5	1219-2134



No. 46

C.H.(mm)	C.W(mm)	C.P(mm)	B.W(mm)
16	330	250	500-550



No. 47

C.H.(mm)	C.W(mm)	C.P(mm)	B.W(mm)
16	440	250	600-700



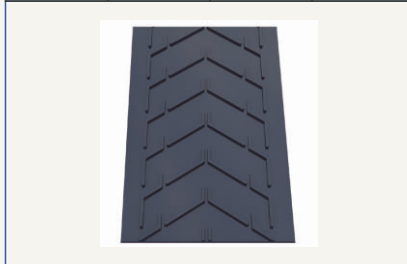
No. 48

C.H.(mm)	C.W(mm)	C.P(mm)	B.W(mm)
16	540	250	800-900



No. 49

C.H.(mm)	C.W(mm)	C.P(mm)	B.W(mm)
16	720	250	1000-1200



No.50

C.H.(mm)	C.W(mm)	C.P(mm)	B.W(mm)
-2	1300	50	500-1300



No. 51

C.H.(mm)	C.W(mm)	C.P(mm)	B.W(mm)
5	465	154.5	500-800



No. 52

C.H.(mm)	C.W(mm)	C.P(mm)	B.W(mm)
5	665	154.5	700-750



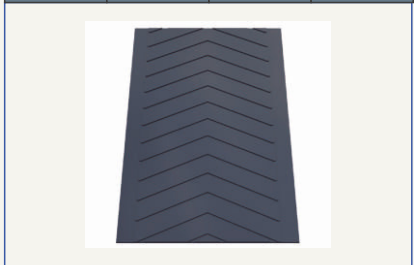
No. 53

C.H.(mm)	C.W(mm)	C.P(mm)	B.W(mm)
5	765	154.5	800-900

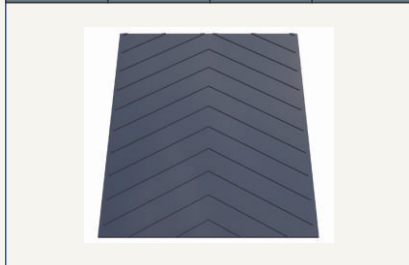


No. 54

C.H.(mm)	C.W(mm)	C.P(mm)	B.W(mm)
5	965	154.5	1000-1200

**No. 55**

C.H.(mm)	C.W(mm)	C.P(mm)	B.W(mm)
5	1540	200	800-1200

**No. 56**

C.H.(mm)	C.W(mm)	C.P(mm)	B.W(mm)
15	300	200	400-500

**No. 57**

C.H.(mm)	C.W(mm)	C.P(mm)	B.W(mm)
15	605	230	600-700

**No. 58**

C.H.(mm)	C.W(mm)	C.P(mm)	B.W(mm)
15	811	306	800-1000

**No. 59**

C.H.(mm)	C.W(mm)	C.P(mm)	B.W(mm)
15	509	235	500-550

**No. 61**

C.H.(mm)	C.W(mm)	C.P(mm)	B.W(mm)
25	375	330	600-800

**No. 62**

C.H.(mm)	C.W(mm)	C.P(mm)	B.W(mm)
2	740	50	800-1000

**No. 63**

C.H.(mm)	C.W(mm)	C.P(mm)	B.W(mm)
3	550	121.24	600-800

**No. 64**

C.H.(mm)	C.W(mm)	C.P(mm)	B.W(mm)
3	700	121.24	800-1000

**No. 66**

C.H.(mm)	C.W(mm)	C.P(mm)	B.W(mm)
3	700	121.24	800-1000

**No. 67**

C.H.(mm)	C.W(mm)	C.P(mm)	B.W(mm)
15	1010	306	1000-1200



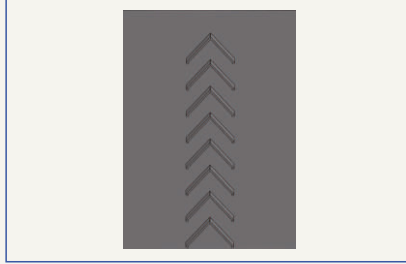
No. 68

C.H.(mm)	C.W(mm)	C.P(mm)	B.W(mm)
15	656.5	232.5	650-800



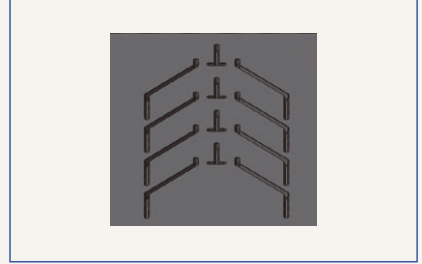
No. 69

C.H.(mm)	C.W(mm)	C.P(mm)	B.W(mm)
4	262	220	300-1200



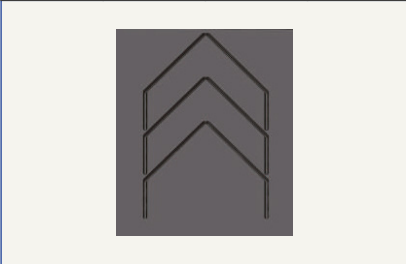
No. 70

C.H.(mm)	C.W(mm)	C.P(mm)	B.W(mm)
25	750	340	800-1200



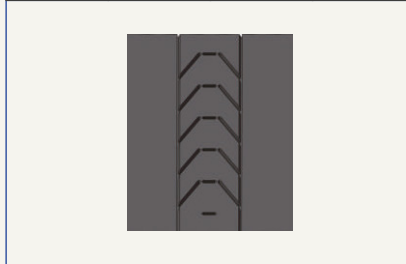
No. 71

C.H.(mm)	C.W(mm)	C.P(mm)	B.W(mm)
15	750	422	800-1200



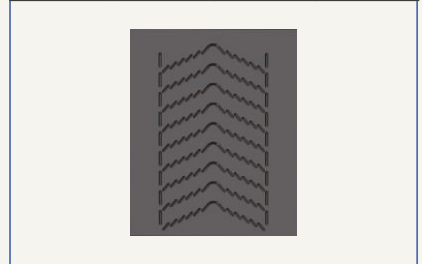
No. 72

C.H.(mm)	C.W(mm)	C.P(mm)	B.W(mm)
25	445	324	450-1200



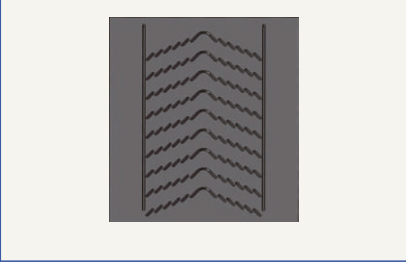
No. 73

C.H.(mm)	C.W(mm)	C.P(mm)	B.W(mm)
15	850	190	850-1200



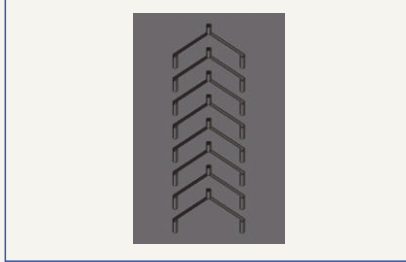
No. 74

C.H.(mm)	C.W(mm)	C.P(mm)	B.W(mm)
15	990	190	1000-1200



No. 75

C.H.(mm)	C.W(mm)	C.P(mm)	B.W(mm)
26	400	200	450-1200



No. 76

C.H.(mm)	C.W(mm)	C.P(mm)	B.W(mm)
15	380	250	400-1200



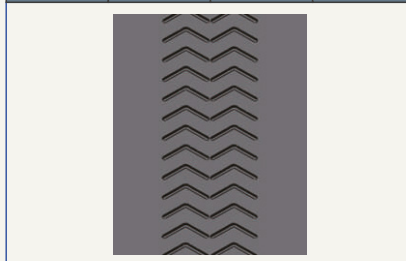
No. 77

C.H.(mm)	C.W(mm)	C.P(mm)	B.W(mm)
15	600	328	650-1200



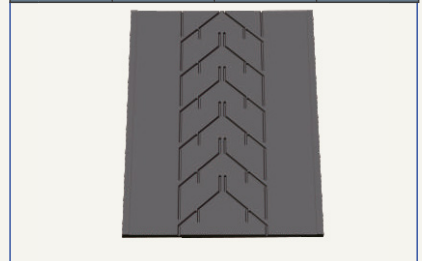
No. 78

C.H.(mm)	C.W(mm)	C.P(mm)	B.W(mm)
8	298	77	300-1200



No. 79

C.H.(mm)	C.W(mm)	C.P(mm)	B.W(mm)
17	630	330	650-1200

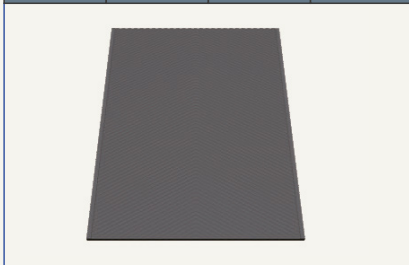


No. 80

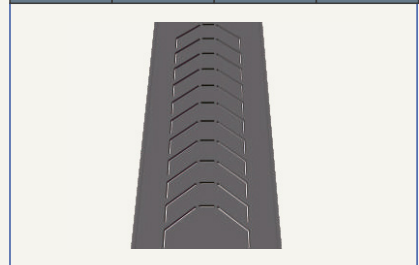
C.H.(mm)	C.W(mm)	C.P(mm)	B.W(mm)
8	2300	120	1219-2134

**No. 81**

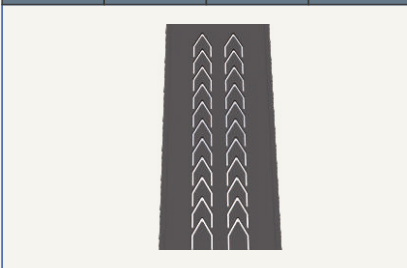
C.H.(mm)	C.W(mm)	C.P(mm)	B.W(mm)
-2	2300	25	1300-2134

**No. 82**

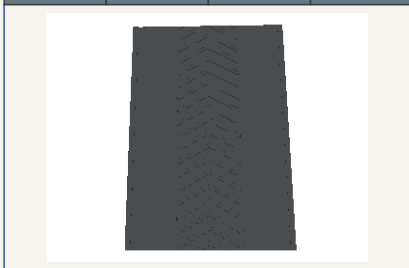
C.H.(mm)	C.W(mm)	C.P(mm)	B.W(mm)
25	1050	335	1200-1600

**No. 83**

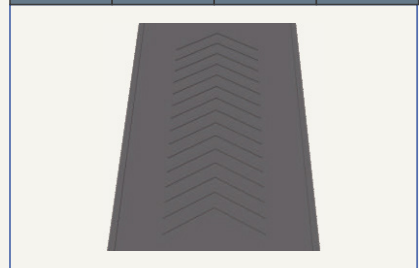
C.H.(mm)	C.W(mm)	C.P(mm)	B.W(mm)
15	180-180	180	600

**No. 84**

C.H.(mm)	C.W(mm)	C.P(mm)	B.W(mm)
-3	550	121	600-900

**No. 85**

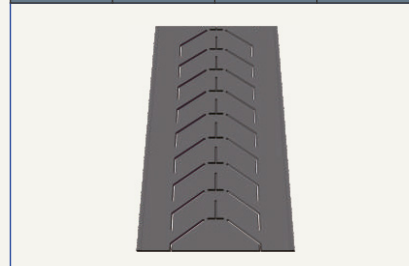
C.H.(mm)	C.W(mm)	C.P(mm)	B.W(mm)
-3	700	121	750-1000

**No. 86**

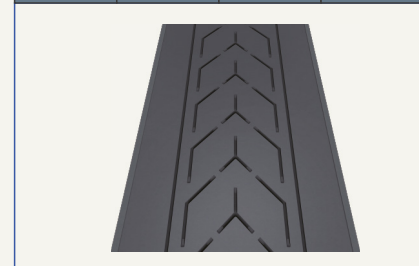
C.H.(mm)	C.W(mm)	C.P(mm)	B.W(mm)
13	200	1140	300-1200

**No. 87**

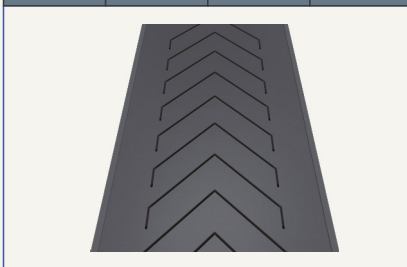
C.H.(mm)	C.W(mm)	C.P(mm)	B.W(mm)
25	1000	400	1200-1600

**No. 88**

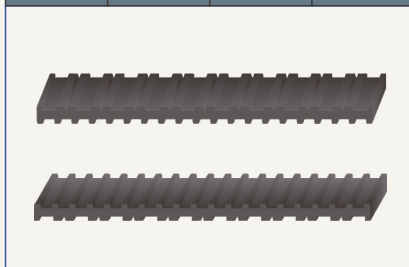
C.H.(mm)	C.W(mm)	C.P(mm)	B.W(mm)
25	620	356	800-1200

**No. 89**

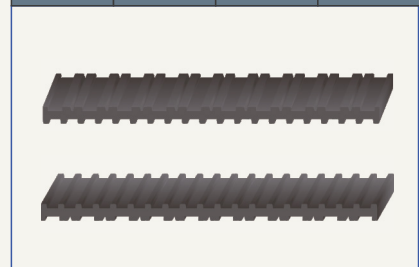
C.H.(mm)	C.W(mm)	C.P(mm)	B.W(mm)
15	1060	306	1200-1600

**No. 90**

C.H.(mm)	C.W(mm)	C.P(mm)	B.W(mm)
7	650	55	600切边带

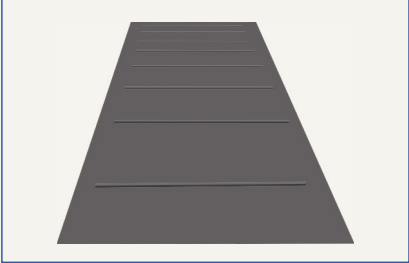
**No. 91**

C.H.(mm)	C.W(mm)	C.P(mm)	B.W(mm)
7	650	50	600切边带



No. 92

C.H.(mm)	C.W(mm)	C.P(mm)	B.W(mm)
35	1900	965	1400/1600/ 1800/2000



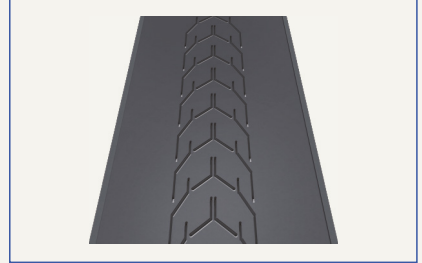
No. 93

C.H.(mm)	C.W(mm)	C.P(mm)	B.W(mm)
32	452	330	500-1000



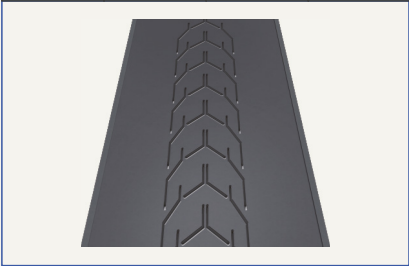
No. 94

C.H.(mm)	C.W(mm)	C.P(mm)	B.W(mm)
25	505	250	600-1000



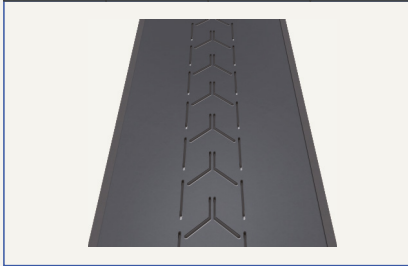
No. 95

C.H.(mm)	C.W(mm)	C.P(mm)	B.W(mm)
16	505	250	600-1000



No. 96

C.H.(mm)	C.W(mm)	C.P(mm)	B.W(mm)
16	334	250	400-1000



No. 97

C.H.(mm)	C.W(mm)	C.P(mm)	B.W(mm)
46	703	200	800/1000/ 1200



No. 98

C.H.(mm)	C.W(mm)	C.P(mm)	B.W(mm)
4	80	40	80



No. 99

C.H.(mm)	C.W(mm)	C.P(mm)	B.W(mm)
26	355	200	400-1000



No.100

C.H.(mm)	C.W(mm)	C.P(mm)	B.W(mm)
12	272	152	300-1000



No. 101

C.H.(mm)	C.W(mm)	C.P(mm)	B.W(mm)
14	840	305	900-1200



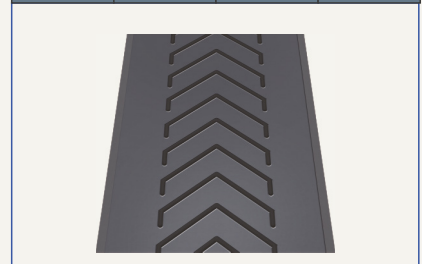
No. 102

C.H.(mm)	C.W(mm)	C.P(mm)	B.W(mm)
3	609	36.5	650-



No. 103

C.H.(mm)	C.W(mm)	C.P(mm)	B.W(mm)
25		110	800-1200



Elaxen



„TECH SOLUTIONS” Sp. z o.o.

Wersalska street 47/75, lok.181

91-212 Lodz, Poland

Tel. +48 42 640 30 50

office@techsolutions-europe.com